



G threaded ball joints, Series SZ-GKG



Product Description

- > Universal articulating mount for vacuum cups
- > Version: Ball and socket with O-ring seal

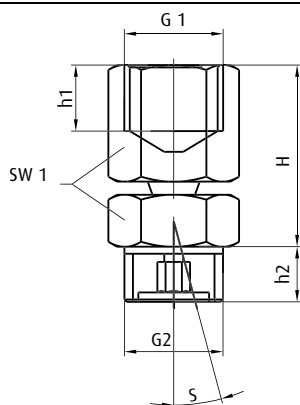
Advantage

- > Compensation for sloping surfaces of the product
- > Angle compensation for sagging products such as sheet goods

Technical Data

Item no.	Thread suction side G2	Thread at the machine G1	Pivoting range S [°]	Lifting force [N]	Weight [oz]
270.072	G1/8-male	G1/8-female	2x15	300	0.92
270.073/1	G1/4-male	G1/4-female	2x15	1500	1.73
270.075	G1/2-male	G1/2-female	2x15	2500	4.09

Dimensions



Item no.	Ø dn [mm]	G1	G2	H [mm]	h1 [mm]	h2 [mm]	SW1	S [°]
270.072	2	G1/8	G1/8	25	8.5	7	14	2x15
270.073/1	3.5	G1/4	G1/4	37	11	10	19	2x15
270.075	4	G1/2	G1/2	38.5	14	11.5	24	2x15



Metric threaded ball joints, Series SZ-GKG



Product Description

- > Universal articulating mount for vacuum cups
- > Version: Ball and socket with O-ring seal

Advantage

- > Compensation for sloping surfaces of the product
- > Angle compensation for sagging products such as sheet goods

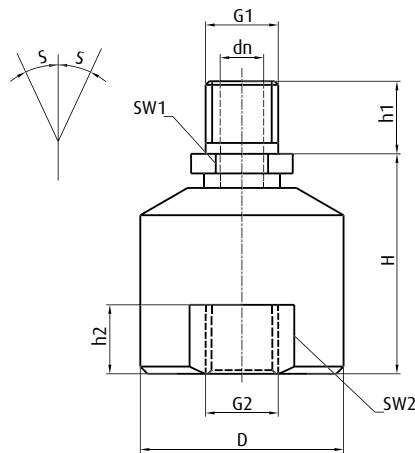
Ordering notes

Using a vacuum filter (e.g. 71.023-71.025) prevents disruptions due to contamination

Technical Data

Item no.	Thread suction side G2	Thread at the machine G1	Pivoting range S [°]	Weight [oz]
270.185	M4-female	M4-male	2x15	0.32
270.186	M6-female	M6-male	2x15	0.71
270.187	M10-female	M10-male	2x15	2.05

Dimensions



Item no.	Ø D [mm]	Ø dn [mm]	G1	G2	H [mm]	h1 [mm]	h2 [mm]	SW1	SW2	S [°]
270.185	15	2	M4	M4	19	4	7	4	--	2x15
270.186	20	3	M6	M6	23	6	6.5	7	--	2x15
270.187	28	6	M10	M10	30	10	9.5	12	24	2x15



Rubber joints, Series SZ-GG



Product Description

- > Universal articulating mount for vacuum cups
- > Version: Rubber-metal connection with vacuum channel

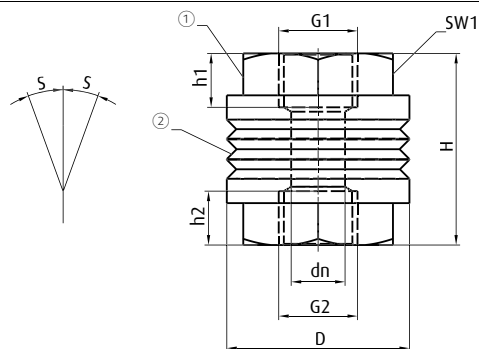
Advantage

- > Compensation for sloping surfaces of the product
- > Angle compensation for sagging products such as sheet goods
- > Automatic reset of the vacuum cup to normal position

Technical Data

Item no.	Thread suction side G2	Thread at the machine G1	Pivoting range S [°]	Lifting force [N]	Weight [oz]
270.199	G1/4-female	G1/4-female	2x25	450	1.73
270.201	G1/4-female	G1/4-female	2x10	850	2.65
270.202	G3/8-female	G3/8-female	2x10	850	2.22
270.203	G1/2-male	G1/2-female	2x12	3000	3.53

Dimensions



① = Brass/steel

② = Rubber

Item no.	Ø D [mm]	Ø dn [mm]	G1	G2	H [mm]	h1 [mm]	h2 [mm]	SW1	S [°]
270.199	30	5	G1/4	G1/4	46	8	8	17	2x25
270.201	30.5	9	G1/4	G1/4	32	9	9	25	2x10
270.202	30.5	11	G3/8	G3/8	32	9	9	25	2x10
270.203	--	6	G1/2	G1/2	33.5	14	14	27	2x12