



Insert gripper - compressed-air controlled  
Customized design example



Application example with insert part

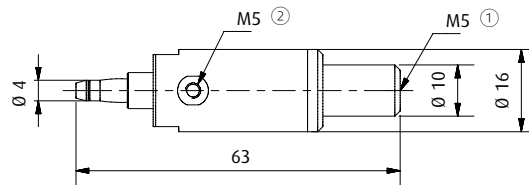
### Product Description

- > Inserting customized threaded bushings thanks to "internal gripping"
- > Precisely tailored to the workpiece
- > Dual-action
- > Connection via  $\varnothing$  10 mm clamp
- > Housing material: brass, other materials on request
- > Weight: 4.06 oz

### Ordering notes

The product example displayed is based on customer specifications and not available as standard.  
We would be pleased to develop a solution optimally customized to your requirements.

### Dimensions



① = Compressed air connection for extending the piston

② = Compressed air connection for pulling in the piston