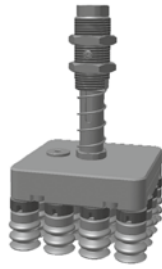
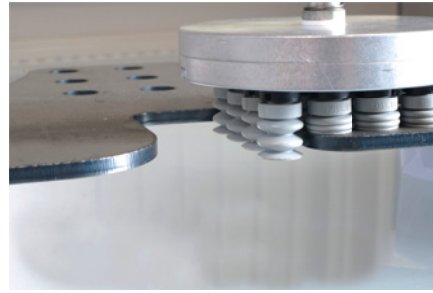


### Low-leak suction plates - Series SPLT



Suction plate 67.010



#### Product Description

Combination of 4x4 or 6x6 bellows suction cups with 2.5 bellows in oil resistant NBR.  
Suction plate suspended using a spring leveler with internal vacuum channel (25 mm stroke). Off-center vacuum connection possible.

#### Advantage

> Reliable suction with variable product geometries

#### Application:

Low-leak suction plates are used wherever product variations or perforation could cause a lack of contact with the product surface during suction (e.g. laser cutters). Ordinary vacuum cups would draw in large quantities of excess air when not in contact with the product. This would cause the entire vacuum circuit to collapse, and other suction cups in the circuit would drop the product. The flow limits used in the SPLT series reduce leakage to a degree that allows the central vacuum unit to maintain an acceptable vacuum level in the circuit.

#### Technical data

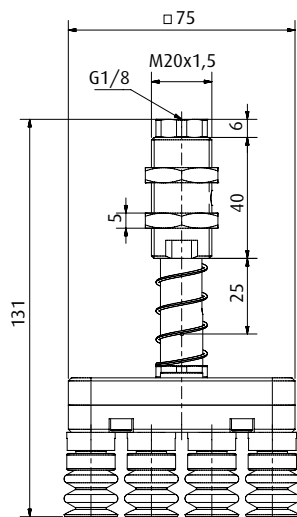
Item no.	Model	Number of Vacuum cups	Lift Spring leveler [mm]	Cup lift [mm]	Gripping force * [N]	Max. Leak ** (Vacuum cups unassigned) [Nl/min]	Connection to the machine	Vacuum connection
<b>Suction plates (unit)</b>								
67.010	SPLT-4x4-25	16	25	9,5	190	24	M20x1,5-male	G1/8-female
67.011	SPLT-6x6-25	36	25	9,5	426	54	M30x1,5-male	G3/8-female

#### Accessories

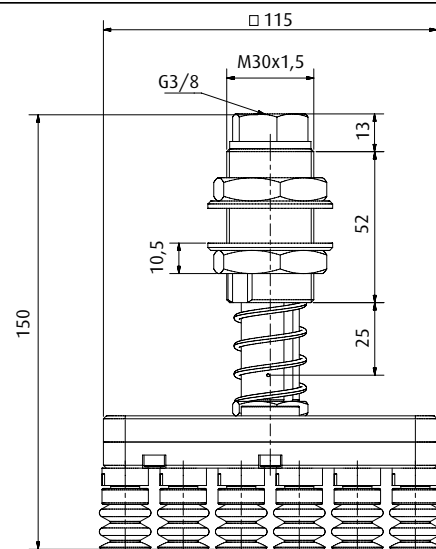
Spare cup	Wrench socket for cup assembly
20.018.125.1	90.008
20.018.125.1	90.008

\* theoretical value at 60 % vacuum and a dry, smooth product surface. Figure excludes safety factor  
\*\* at 60 % vacuum

#### Dimensions



67.010



67.011