

# Sheet metal handling | Vacuum cups

Flat and bellows vacuum cups – Series SM-P / SM-T

## Flat and bellows vacuum cups – Series SM-P / SM-T



Flat vacuum cups SM-PI/PA



Bellows vacuum cups SM-T

### Product Description


Flat and bellows vacuum cups of oil-resistant NBR for handling metal sheets.

Distinct radially extending cleats prevent "deep drawing" of the product as well as any slipping of oily sheets (Type SM-P). The firmly bolted fitting (from Ø 20 mm) provides a secure seating.

Cups typ SM-T is usually installed as a suction plate.

It has a special fitting with built-in orifice restriction. This prevents the overall loss of vacuum should some of the cups become uncovered. The deep design of the fitting results in a support that clearly defines the vacuum cup stroke.

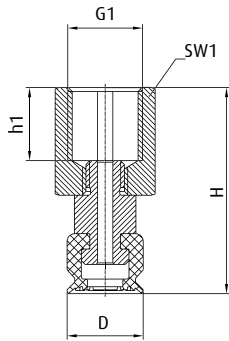
### Technical Data

Item no.	Model / Lip dimensions	Connection thread		Material / color	Number of bellows
<b>Flat vacuum cups slip-resistant with female thread – Series SM-PI</b>					
100.010.100.1	SM-PI-10	G1/8-female	0,5	NBR (sw)	--
100.020.101.1	SM-PI-20	G1/8-female	1,1	NBR (sw)	--
100.030.102.1	SM-PI-30	G1/8-female	1,8	NBR (sw)	--
100.040.103.1	SM-PI-40	G1/8-female	2,5	NBR (sw)	--
100.050.104.1	SM-PI-50	G1/4-female	3,1	NBR (sw)	--
<b>Flat vacuum cups slip-resistant with male thread – Series SM-PI</b>					
100.010.110.1	SM-PA-10	G1/8-male	0,5	NBR (sw)	--
100.020.111.1	SM-PA-20	G1/8-male	1,1	NBR (sw)	--
100.030.112.1	SM-PA-30	G1/8-male	1,8	NBR (sw)	--
100.040.113.1	SM-PA-40	G1/8-male	2,5	NBR (sw)	--
100.050.114.1	SM-PA-50	G1/4-male	3,1	NBR (sw)	--
<b>Bellows vacuum cups with a special fitting for sucker plate units – Series SM-T</b>					
20.018.125.1	SM-T-18	M8-male	9,5	NBR (gr)	2,5

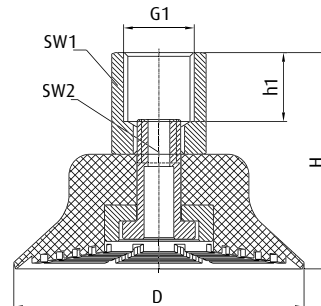
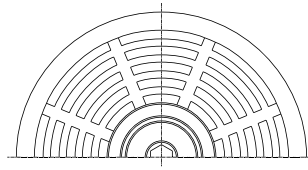
### Accessories

Spare cup	Wrench socket for cup assembly
104.010.065.1	--
104.020.066.1	--
104.030.067.1	--
104.040.068.1	--
104.050.069.1	--
104.010.065.1	--
104.020.066.1	--
104.030.067.1	--
104.040.068.1	--
104.050.069.1	--
21.018.118.1	90.008

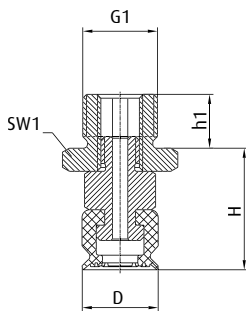
### Dimensions



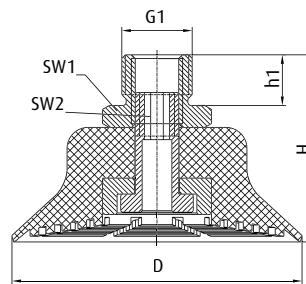
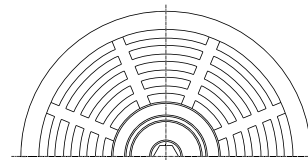
Flat vacuum cups slip-resistant with female thread – Series SM-PI  
Ø 10 mm



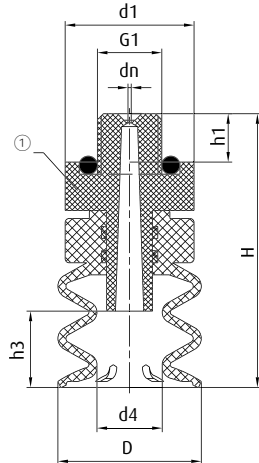
Flat vacuum cups slip-resistant with female thread – Series SM-PI  
Ø 20 | 30 | 40 | 50 mm



Flat vacuum cups slip-resistant with male thread – Series SM-PI  
Ø 10 mm



Flat vacuum cups slip-resistant with male thread – Series SM-PI  
Ø 20 | 30 | 40 | 50 mm



Bellows vacuum cups with a special fitting for vacuum carpets – Series SM-T  
Ø 18 mm

① = Special fitting with installed orifice Ø 0.4 mm. Material: PA6/ O-ring NBR

Continued on the next page →

# Sheet metal handling | Vacuum cups

Flat and bellows vacuum cups – Series SM-P / SM-T

Item no.	Ø D [mm]	Ø d1 [mm]	Ø d4 [mm]	Ø dn [mm]	G1	H [mm]	h1 [mm]	h3 [mm]	SW1	SW2
<b>Flat vacuum cups slip-resistant with female thread – Series SM-PI</b>										
100.010.100.1	10	--	--	--	G1/8	27	9,5	--	13	--
100.020.101.1	20	--	--	--	G1/8	24	9,5	--	13	3
100.030.102.1	30	--	--	--	G1/8	26	9,5	--	13	3
100.040.103.1	40	--	--	--	G1/8	30	9,5	--	13	3
100.050.104.1	50	--	--	--	G1/4	35	11	--	17	3
<b>Flat vacuum cups slip-resistant with male thread – Series SM-PI</b>										
100.010.110.1	10	--	--	--	G1/8	16	7	--	13	--
100.020.111.1	20	--	--	--	G1/8	23	8	--	13	3
100.030.112.1	30	--	--	--	G1/8	25	8	--	13	3
100.040.113.1	40	--	--	--	G1/8	29	8	--	13	3
100.050.114.1	50	--	--	--	G1/4	32	10	--	17	3
<b>Bellows vacuum cups with a special fitting for sucker plate units – Series SM-T</b>										
20.018.125.1	18	16	8	0,4	M8	34	6	9,5	--	--