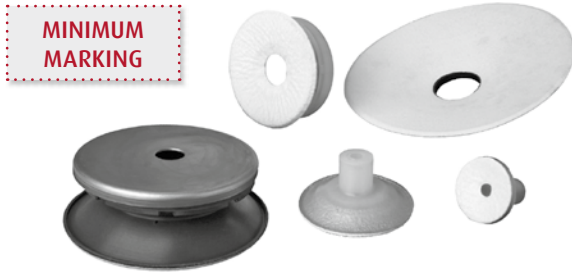




Temperature-resistant, felt-coated vacuum cups – Series SX-F



Product Description	Advantage
<p>Almost mark-free special vacuum cup for high temperature requirements, e.g. in the glass industry. Special felt pad vulcanized to elastomer carrier. Migration of silicone particles is prevented by vapour-deposited aluminum layer. Connection up to Ø 70 mm by means of plug nipple, from Ø 90 mm with bolted bracket plate.</p>	<ul style="list-style-type: none"> <li>&gt; Temperature resistant up to 932 °F</li> <li>&gt; Almost mark-free</li> <li>&gt; Cost-effective replacement of worn seals</li> </ul>

**Note**

There is a small leak at first use resulting from the texture of the special felt, but after a brief period of use this will be significantly reduced by the thickening of the felt layer.

**Technical Data**

Item no.	Model / Lip dimensions	↓	Weight [oz]	Max. operating temperature [°F]	Material / color	Number of bellows
26.025.009._*	SX-F-25	2	0.21	932	SI (tr/ge)	--
26.037.010._*	SX-F-40	3	0.35	932	SI (tr/ge)	--
26.070.011._*	SX-F-70	7	0.85	932	SI (tr/ge)	--
26.090.001._*	SX-F-90	17	2.82	932 (SI), 572 (FKM)	SI (tr/ge), FKM (sw/ge)	1.5
26.120.002._*	SX-F-120	18	4.94	572	FKM (sw/ge)	1.5
26.160.003._*	SX-F-160	18	7.23	572	FKM (sw/ge)	1.5

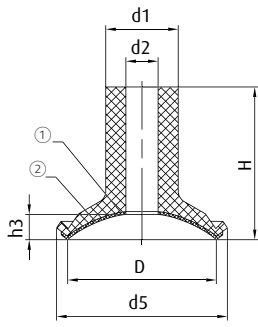
**Accessories**

Item no.	Suitable fittings				
	G1/8-male	G1/8-female	G1/4-male	G1/4-female	G3/8-female
26.025.009._*	270.132	270.114	270.208	270.178	--
26.037.010._*	270.132	270.114	270.208	270.178	--
26.070.011._*	270.132	270.114	270.208	270.178	--
26.090.001._*	--	--	--	--	270.400
26.120.002._*	--	--	--	--	270.402
26.160.003._*	--	--	--	--	270.404

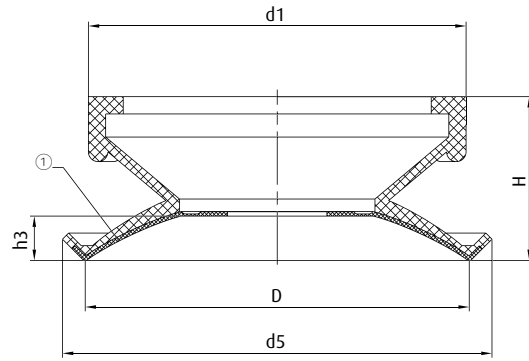
\* When ordering please add the appropriate material code to the item no. You will find it on [www.fipa.com](http://www.fipa.com)



Dimensions



Ø 24 | 37 | 67 mm



Ø 89 | 120 | 150 mm

① = Felt pads

② = For silicone vacuum cups with silicone membranes: evaporated aluminum layer

Item no.	Ø D [mm]	Ø d1 [mm]	Ø d2 [mm]	Ø d5 [mm]	H [mm]	h3 [mm]
26.025.009.*	24	16	8	29	36	3.3
26.037.010.*	37	18	8	42	38	6.5
26.070.011.*	67	21	8	71	36	8
26.090.001.*	89	87	--	99	38	10.5
26.120.002.*	120	108	--	129	45	17.5
26.160.003.*	150	130	--	161	48	16.5

\* When ordering please add the appropriate material code to the item no. You will find it on [www.fipa.com](http://www.fipa.com)